



32 Garsdale Close, Scunthorpe, DN16 2RN

£150,000

Built by Keigar Homes is this two bed end terrace, an ideal first time buy or investment with no onward chain.

The property comprises of an entrance hall, lounge, downstairs W.C. and a good size kitchen with French doors onto the rear garden. Upstairs there is two double bedrooms and a modern bathroom. Outside is off road parking and a rear garden with a patio area. Close to local amenities and ready to move straight into.

To book a viewing or for any more information please get in touch!

Entrance hall

Kitchen 12'2" x 8'9" (3.73 x 2.67)



Lounge 13'1" x 12'2" (4.01 x 3.73)



Downstairs W.C.

Landing

Bedroom one 12'2" x 8'11" (3.73 x 2.74)



Bedroom two 12'2" x 8'9" (3.73 x 2.67)

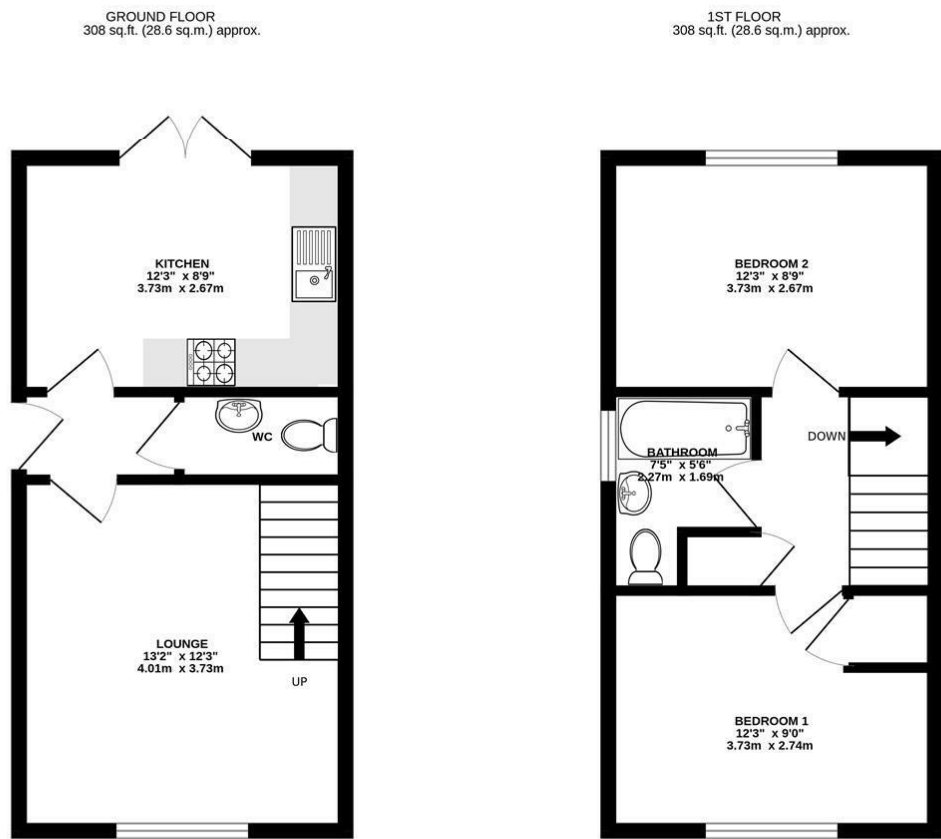


Bathroom 7'5" x 5'6" (2.27 x 1.69)



Outside

Floor Plan



TOTAL FLOOR AREA: 616 sq.ft. (57.3 sq.m.) approx.

Whilst every attempt has been made to ensure the accuracy of the floorplan contained here, measurements of doors, windows, rooms and any other items are approximate and no responsibility is taken for any error, omission or mis-statement. This plan is for illustrative purposes only and should be used as such by any prospective purchaser. The services, systems and appliances shown have not been tested and no guarantee as to their operability or efficiency can be given.

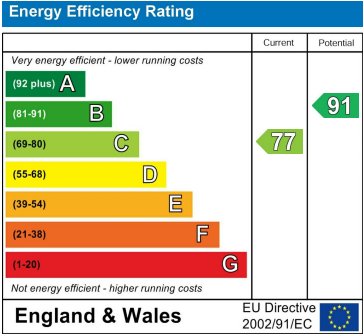
Made with Metropix ©2020



Area Map



Energy Efficiency Graph



These particulars, whilst believed to be accurate are set out as a general outline only for guidance and do not constitute any part of an offer or contract. Intending purchasers should not rely on them as statements of representation of fact, but must satisfy themselves by inspection or otherwise as to their accuracy. No person in this firms employment has the authority to make or give any representation or warranty in respect of the property.